



CUSTOM TOUCH SOLUTIONS FOR GAMING INDUSTRY

since 1994



www.dignity-eu.com



ABOUT US

DIGNITY

The best partner for your success in Gaming

Dignity Electronics was founded in 1994 as an HMI and touch solutions supplier, and for more than twenty five years has been focused on researching, designing and manufacturing interface solutions, including membrane and capacitive switches, touch screens, and touch monitors, for consumer and commercial applications.

Dignity provides standard and custom-designed touch products to companies worldwide, and has the needed technical know-how and capabilities to build the right solution for the customer's needs.

Dignity currently manages two facilities with a total area of more than 25,000 square meters, including a class 1000 clean room production area of more than 3500 square meters and multiple touch screen integration production cells rated to class 100 and above.

With more than 500 workers, Dignity currently produces millions of components per year, including hundreds of thousands of touch screens.

With our new integrated facility in place, we have multiple automated and semi-automated production lines, as well as the manufacturing and design capabilities necessary to serve our customers for both low-volume, highly-customized projects as well as high-volume, standardized production runs.

In 2019, we established a subsidiary, Dignity Europe, in Valencia (Spain) to better serve our valued European customers with in-person product consultations and support, as well as standard product inventory and stock available for lead time sensitive projects.

Touch Panels & Modules

- Custom & Standard Products
- Projected Capacitive
- Resistive
- Optical Bonding
- Standard & Custom Touch Monitors

Other Touch Solutions

- Membrane Switches
- Capacitive Switches



Working from either your specifications or designing a custom solution for your needs based on our experience and extensive design library, we can quickly develop fully customized products that integrate seamlessly into your end application. Our engineering and sales teams oversee the project from prototyping through production.

solution



Touch monitors



Touch sensors



Cover Lens



Display Enhancements

FULL SOLUTION ENGINEERING

TOUCH MONITORS

- Range of standard cost-effective and premium products for a variety of applications.
- Custom touch monitor design, tooling and fabrication from 4.3" to 86".
- Custom lighting, enclosure and cover glass design as per customer specification.

TOUCH SENSORS

- We provide both resistive and projected capacitive touch technology.
- A range of sensor structures and sizes available (4.3"-86" GG, GF, GFF.).
- Customized touch performance design and tuning provided in-house.

COVER LENS

- Highly customized cover lens design available.
- Silk screening, cutouts, custom bezel design.
- Chemically strengthened, heat tempered, borosilicate and other glass varieties available.

DISPLAY ENHANCEMENTS

- Variety of enhancements available.
- Range of Optical enhancements.
- Mirror coating and Deadfront effects available.
- Multiple EMI shielding options.



CUSTOM TOUCH SOLUTIONS FOR GAMING INDUSTRY

Drinks Ad Screen



Analysis Screen



Arcade machine



Video Lottery Terminal



Wayfinding



Roulette



Slot Machine



Bingo Machine



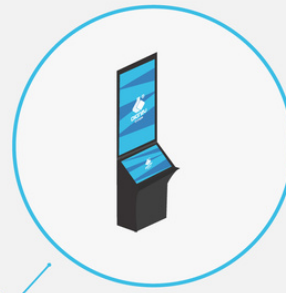
Digital Table



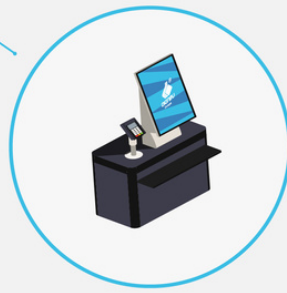
Sports Bettings



Flat Slot Machine



Cash Counter



Cash IO Kiosk





Services

ADAPTED TO YOUR NEEDS

PCAP touch-sensor & touch-monitor.

Our European team has over 30 years experience developping in gaming with OEM and operators. We can also redesign, re-engineer, restore or remanufacture any PCAP touch-sensor or touch-monitor.



REPLACEMENTS

FOR TOUCH SENSORS AND MONITORS

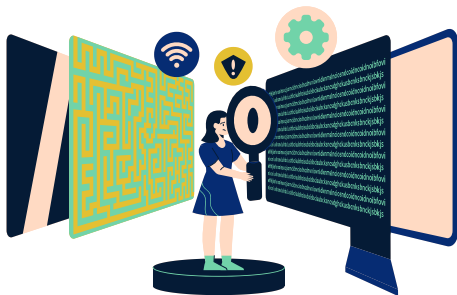
We offer PCAP touch-sensors and touch-monitors replacements.



RE-DESIGN

YOUR TOUCH PANELS AND MONITORS

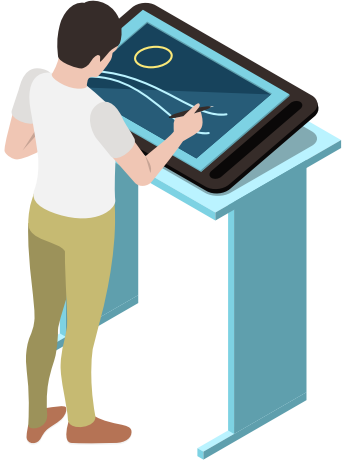
Replace to adapt it to any need you may have.



RE-ENGINEERING

YOUR IDEAS

We offer in-house design, engineering services, firmware tuning and other options to optimize the final touch solution for your end use.



Gaming



TOUCH & NON-TOUCH MONITOR KITS

For those customers that need to handle integration in-house, we offer Touch & Non-Touch monitor kits with all of the components needed for display integration pre-tested and packed, ready for assembly into a finished monitor. Our experienced engineers are able to guide you in the decision as to which display technology best suits your product, whether it requires a wide temperature range, sunlight readability, fast response time, or low power operation

Available sizes 15,6" 18,5" 21,5" 23,8" 27" 32" 42" 55"



TOUCH KITS

Size	Article	Description	Type
15,6	DYKT1562W01	15,6" TP + LCD + ELECTRONICS KITS	TOUCH KIT
19	DYKT1902W01	19" TP + LCD + ELECTRONICS KITS	TOUCH KIT
21,5	DYKT2152W03	21,5" TP + LCD + ELECTRONICS KITS	TOUCH KIT
23,8	DYKT2382W01	23,8" TP + LCD + ELECTRONICS KITS	TOUCH KIT
27	DYKT2702W01	27" TP + LCD + ELECTRONICS KITS	TOUCH KIT
31,5	DYKT3202W01	31,5" TP + LCD + ELECTRONICS KITS	TOUCH KIT
42	DYKT4301W01	42" TP + LCD + ELECTRONICS KITS	TOUCH KIT
55	DYKT5501W01	55" TP + LCD + ELECTRONICS KITS	TOUCH KIT

NON-TOUCH KITS

Size	Article	Description	Type
19	DYKT1902W02	19" LCD + ELECTRONICS KITS + GLASS ONLY	NON-TOUCH KIT
21,5	DYKT2152W02	21,5" LCD + ELECTRONICS KITS + GLASS ONLY	NON-TOUCH KIT
23,8	DYKT2382W02	23,8" LCD + ELECTRONICS KITS + GLASS ONLY	NON-TOUCH KIT
27	DYKT2702W02	27" LCD + ELECTRONICS KITS + GLASS ONLY	NON-TOUCH KIT
31,5	DYKT3202W02	31,5" LCD + ELECTRONICS KITS + GLASS ONLY	NON-TOUCH KIT

TOUCH & NON-TOUCH MONITORS

DE and DG Series

Applications

- Amusement
- Digital Signage
- Kiosk or Self Service
- Industrial automation

RGB MONITOR
Available

Aluminium Frame
Available

Available sizes



DE Serie / Zero bezel

18,5" model



18,5"

Touch monitor



View complete datasheet

DE1850-0001-C820

Open Frame Touch Monitor



1366(H) x 768(V)

Zero bezel

PCAP



Type	Number colors	Brightness	Contrast ratio	I/Ports	Power Consumption (Typical ON)	Weight (Unpackage)
TOUCH	16.7M	300 nits	1000:1	VGA, DVI	ON (Default - 80% Brightness): 17W	3.8kg

Available too:

Non-Touch monitor



DE1851-0011-N820

Open Frame Non-Touch Monitor



21,5"

Touch monitor



DE2150-0002-C810
Open Frame Touch Monitor

View complete datasheet



1920(H) x 1080(V)

Zero bezel

PCAP



Number colors	Brightness	Contrast ratio	I/Ports	Power Consumption (Typical ON)	Weight (Unpackage)
16.7M	250 nits	1000:1	Serial port (IntelliTouch only), USB Type B, RJ45 for OSD remote key, VGA,HDMI,Display Port, 12V D/C in	ON (Default - 80% Brightness): 19W	4.9 kg

Available too:

Non-Touch monitor



DE2151-0012-N810 Open Frame Non-Touch Monitor

23,8"

Touch monitor

**DE2380-0003-C810**

Open Frame Touch Monitor

[View complete datasheet](#)

1920(H) x 1080(V)

Zero bezel

PCAP



CE

2 YEARS WARRANTY

Number colors	Brightness	Contrast ratio	I/Ports	Power Consumption (Typical ON)	Weight (Unpackage)
16.7M	:250 nits	1000:1	Serial port (IntelliTouch only), USB Type B, RJ45 for OSD remote key, VGA,HDMI,Display Port, 12V D/C in	ON (Default - 80% Brightness): 17W	5.8 kg

Available too:

Non-Touch monitor

**DE2381-0013-N810** Open Frame Non-Touch Monitor

27"

Touch monitor

**DE2700-0004-C810**

Open Frame Touch Monitor

[View complete datasheet](#)

1920(H) x 1080(V)

Zero bezel

PCAP



CE

2 YEARS WARRANTY

Number colors	Brightness	Contrast ratio	I/Ports	Power Consumption (Typical ON)	Weight (Unpackage)
16.7M	300 nits	3000:1	Serial port (IntelliTouch only), USB Type B, RJ45 for OSD remote key, VGA,HDMI,Display Port, 12V D/C in	ON (Default - 80% Brightness): 17W	7.3 kg

Available too:

Non-Touch monitor

**DE2701-0014-N810** Open Frame Non-Touch Monitor



31,5"

Touch monitor



View complete datasheet

DE3150-0005-C810
Open Frame Touch Monitor



1920(H) x 1080(V)

Zero bezel

PCAP



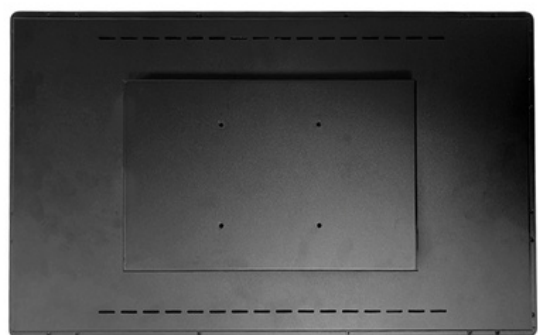
Number colors	Brightness	Contrast ratio	I/Ports	Power Consumption (Typical ON)	Weight (Unpackage)
16.7M	350 nits	1200:1	Mini-USB, RJ45 for OSD remote key, VGA, HDMI, Display Port, 24V D/C in	ON (Default - 80% Brightness): 20W	9 kg

Available too:

Non-Touch monitor



DE3151-0015-N810 Open Frame Non-Touch Monitor



18,5

Touch monitor



View complete datasheet

DG1850-0006-C810
Open Frame Touch Monitor



1366(H) * 768(V)

with FRAME

PCAP



Number colors	Brightness	Contrast ratio	I/Ports	Power Consumption (Typical ON)	Weight (Unpackage)
16.7M	300 nits	1000:1	Serial port (IntelliTouch only), USB Type B, RJ45 for OSD remote key, VGA, HDMI, Display Port, 12V D/C in	ON (Default - 80% Brightness): 17W	9 kg

Available too:

Non-Touch monitor



DG1851-0016-N810 Open Frame Non-Touch Monitor

21,5"**Touch monitor****DG2150-0007-C810**

Open Frame Touch Monitor

View complete datasheet



1920(H) x 1080(V)

with FRAME

PCAP



Number colors	Brightness	Contrast ratio	I/Ports	Power Consumption (Typical ON)	Weight (Unpackage)
16.7M	50 nits	1000:1	Serial port (IntelliTouch only), USB Type B, RJ45 for OSD remote key, VGA,HDMI,Display Port, 12V D/C in	ON (Default - 80% Brightness): 19W	5.3 kg

Available too:

Non-Touch monitor**DG2151-0017-N810**

Open Frame Non-Touch Monitor

23,8"**Touch monitor****DG2380-0008-C810**

Open Frame Touch Monitor

View complete datasheet



1920(H) x 1080(V)

with FRAME

PCAP



Number colors	Brightness	Contrast ratio	I/Ports	Power Consumption (Typical ON)	Weight (Unpackage)
16.7M	250 nits	1000:1	Serial port (IntelliTouch only), USB Type B, RJ45 for OSD remote key, VGA,HDMI,Display Port, 12V D/C in	ON (Default - 80% Brightness): 17W	6.22 kg

Available too:

Non-Touch monitor**DG2381-0018-N810**

Open Frame Non-Touch Monitor

27"**Touch monitor****DG2700-0009-C810**

Open Frame Touch Monitor

View complete datasheet



1920(H) x 1080(V)

with FRAME

PCAP



Number colors	Brightness	Contrast ratio	I/Ports	Power Consumption (Typical ON)	Weight (Unpackage)
16.7M	300 nits	3000:1	Serial port (IntelliTouch only), USB Type B, RJ45 for OSD remote key, VGA,HDMI,Display Port, 12V D/C in	ON (Default - 80% Brightness): 17W	7.74 kg

Available too:

Non-Touch monitor**DG2701-0019-N810**

Open Frame Non-Touch Monitor



31,5"

Touch monitor



DG3150-0010-C810-B0
Open Frame Touch Monitor

View complete datasheet



1366(H) x 768(V)

with FRAME

PCAP



Number colors	Brightness	Contrast ratio	I/Ports	Power Consumption (Typical ON)	Weight (Unpackage)
16.7M	: 350 nits	1200:1	Mini-USB, RJ45 for OSD remote key, VGA, HDMI, Display Port, 24V D/C in	ON (Default - 80% Brightness): 20W	11 kg

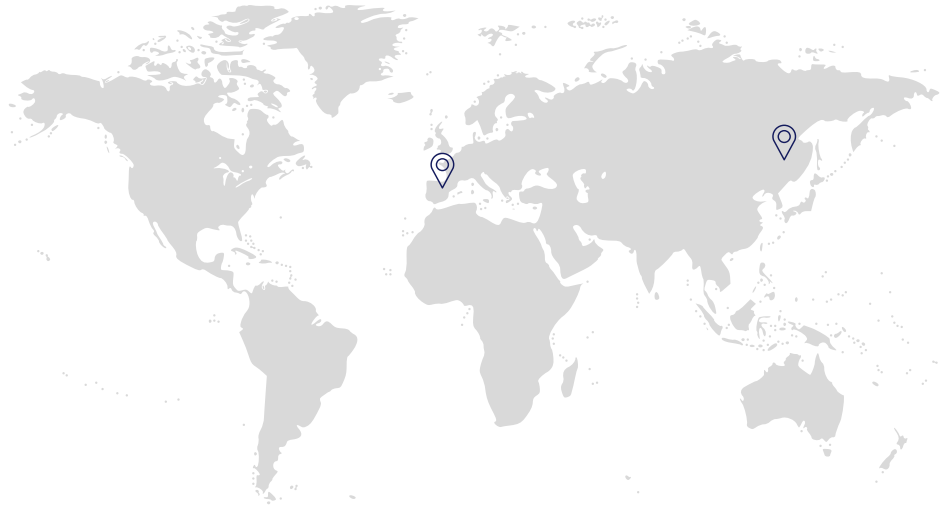
Available too:

Non-Touch monitor



DG3151-0020-N810 Open Frame Non-Touch Monitor

DIGNITY



Dignity Europe, S.L.

Ctra. Masía del Juez, 27, Km.1 - 46909
Torrent (Valencia) Spain +34 960 640 073
info@dignity-eu.com

Dignity Electronics Technology Co. Ltd.

No. 8 Chaoguang Middle Road, XiaoC
Huangpu, Rongui, Shunde District, Foshan, C
Guangdong, P.R.C.

To find out more about our range of standard and custom touch solutions, or to consult on a project, please visit www.dignity-eu.com or contact the sales office nearest you.

Dignity reserves the right to change or update, with out notice, any information contained within; to after, without notice, the structure, specifications, materials or other aspects contained within; and to discontinue production of any products specified her or elsewhere. The Dignity logo is a registered trademark of Dignity Electronics Technology Co. Ltd.® 2018.